

SERVICE



LETTER

Service Letter No. 256

November 21, 1955

TO: All Distributors, Dealers and Owners

SUBJECT: Heater Fuel Shut-Off Valve

MODELS AFFECTED: PA-23 Apaches, serials 23-1 to 23-295 inclusive; 23-297, 23-299 to 23-303 inclusive; 23-305 to 23-308 inclusive and 23-317.

We have been experiencing a little trouble with the packing nut on the heater fuel shut-off valve working loose during valve operation. A safety clamp, Part No. 18926-00, has been devised and is now being installed on all new production airplanes.

It is suggested that this clamp be installed, per the sketch on the reverse side of this letter, whenever it becomes necessary to remove the bottom access panel on the fuselage for any other reason. Clamp, Part No. 18926-00 can be obtained through your nearest Piper distributor or dealer on a No Charge basis.

No warranty labor will be allowed.

Very truly yours,

PIPER AIRCRAFT CORPORATION

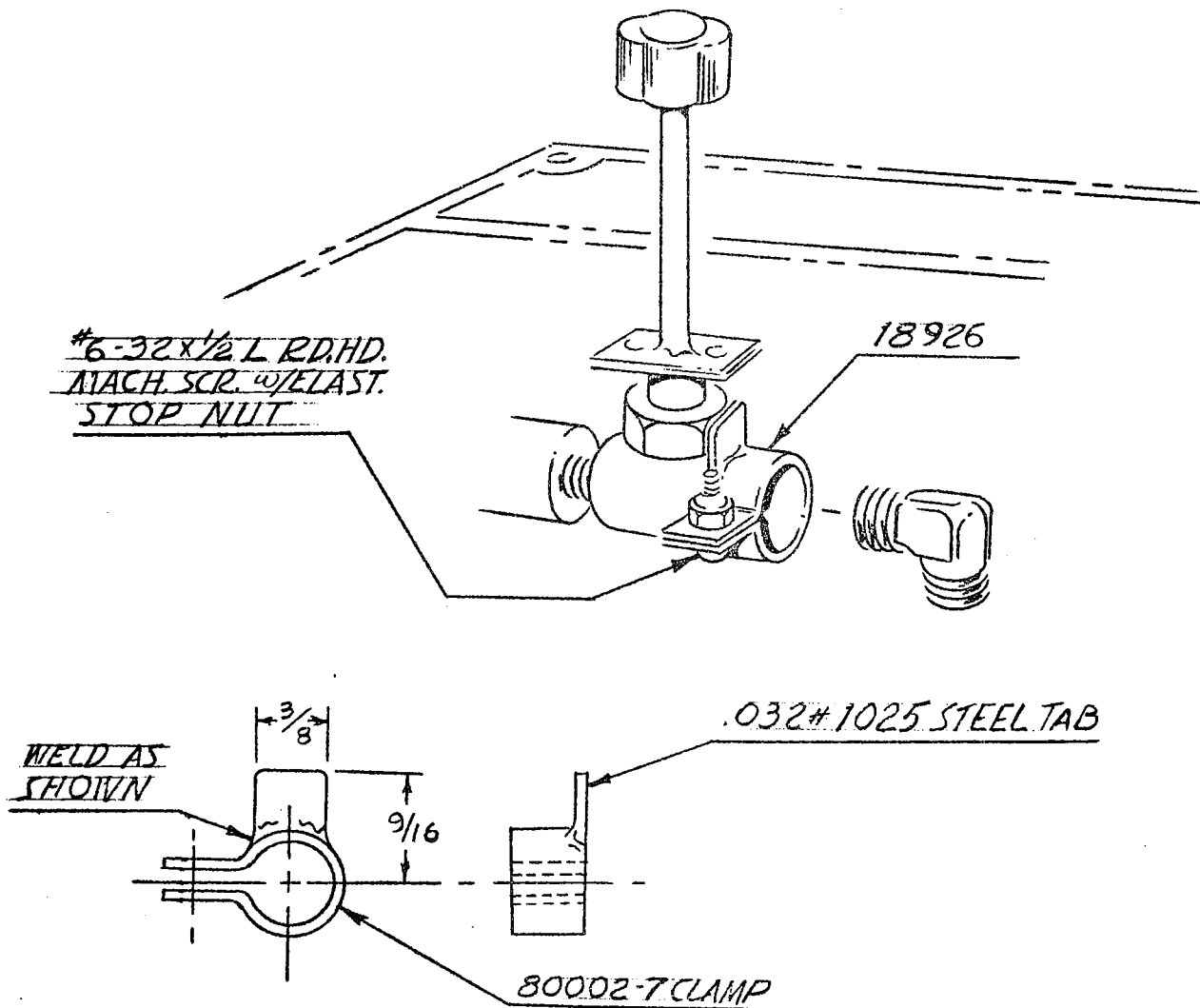

Rolland Boardman
Service Manager

RB:gh

PIPER AIRCRAFT CORPORATION, LOCK HAVEN, PA., U. S. A.

INSTALLATION INSTRUCTIONS

1. Remove large access panel from bottom of fuselage directly beneath front spar.
2. Spread clamp (18926-00) and place over heater fuel shut-off valve as shown. (Valve is located in fuel control box directly forward of front spar at center line of airplane.) Make certain lug of clamp is firmly against packing nut of valve before tightening machine screw and elastic stop nut on clamp.



HEATER FUEL SHUTOFF VALVE	
SKETCH "H"	LETTER #256
PIPER AIRCRAFT CORP.	
LOCK HAVEN, PA.	